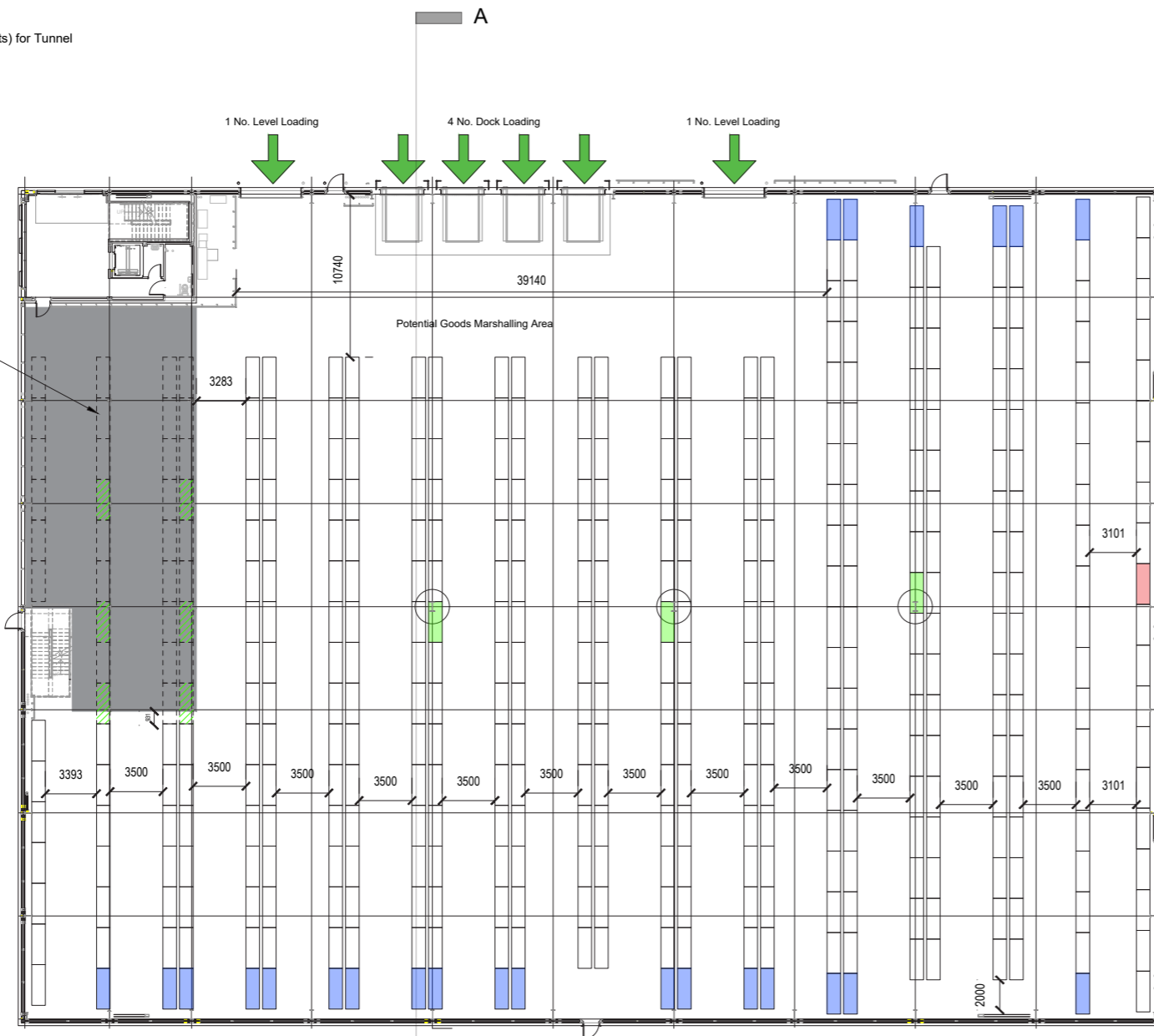


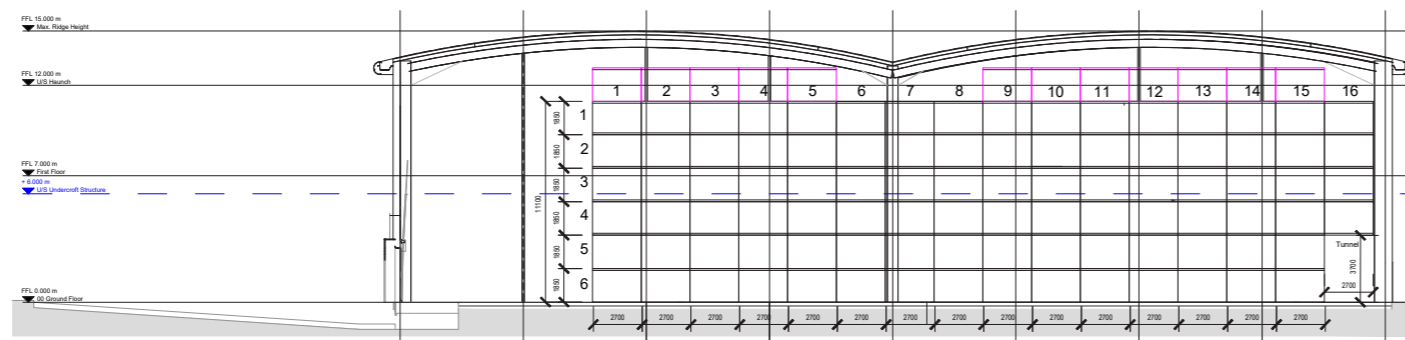
- Loss of 1 pallet per rack for valley columns locations
- Loss of two racks (4 Pallets) over exit door
- Loss of two racks (4 Pallets) for Tunnel

First floor and plant deck shown hatched. Clear height to underside of structure and pipework of 6000mm. Potential for additional racking subject to Specialist Racking Design shown dashed.

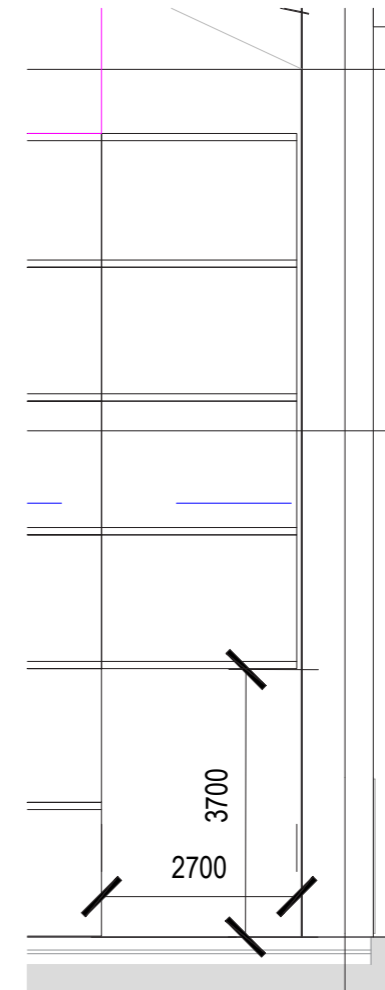


Racking Layout Plan -
Scale - 1:200

Racking Layout Section -
Scale - 1:200



Indicative Tunnel Section
Scale - 1:50



Racking Assumptions (12m Haunch)

Racking space for 2no. pallets assumed as: 1850(h)x2700(w)x900(d)mm
Space between back-to-back racks: 200mm
Minimum aisle width: 3500mm
Minimum one-way circulation width: 2000mm

No. full height (to u/s haunch) racking spaces: 2,262 no. racks (= 4,524no. pallet spaces)
No. unobstructed tunnels (24no.): 96no. racks (=192no. pallet spaces)
No. obstructed rack positions by columns (3no.): 12no. racks (=24no. pallet spaces)
No. escape door racking positions (1no.): 4no. racks (=8no. pallet spaces)

Total pallet capacity to underside of haunch within main warehouse:
4,524 + 192 + 24 + 8 = 4,748 pallets

Potential additional racking below the undercroft shown dashed to maximum height of 6m.

No. unobstructed racking spaces below the undercroft (27no.): 81 no. racks (= 162no. pallet spaces)
No. obstructed rack positions by columns below the undercroft (6no.): 18no. racks (=18no. pallet spaces)

Total potential pallet capacity to the undercroft:
162 + 18 = 180 Additional pallets

Potential additional racking within the apex void.

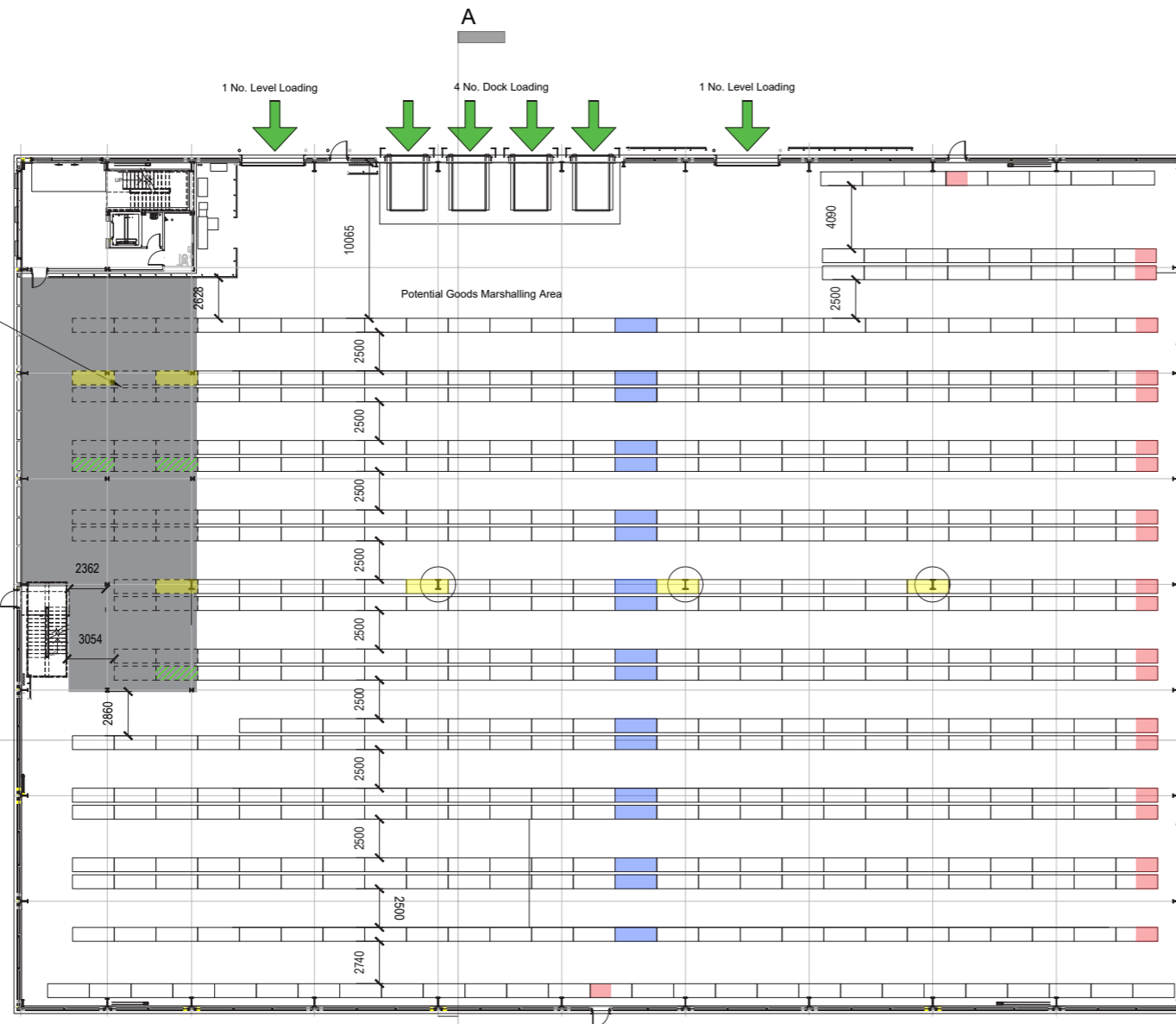
No. racking spaces above the haunch: 304 no. racks
(= 608no. pallet spaces)

Total potential pallet capacity for 12m haunch:
4,748 + 180 + 608 = 5,536 pallets

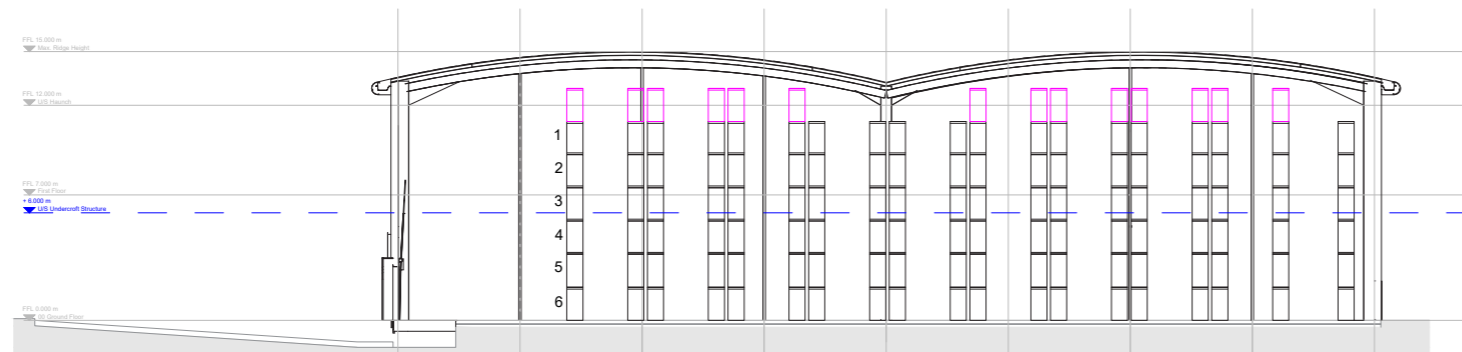
Note:
Racking layout shown illustratively only. Confirmation of actual pallet numbers to be given by Specialist Designer to suit fire strategy and compliant escape distances.

5,536
WIDE AISLE
POSITIONS (UK)

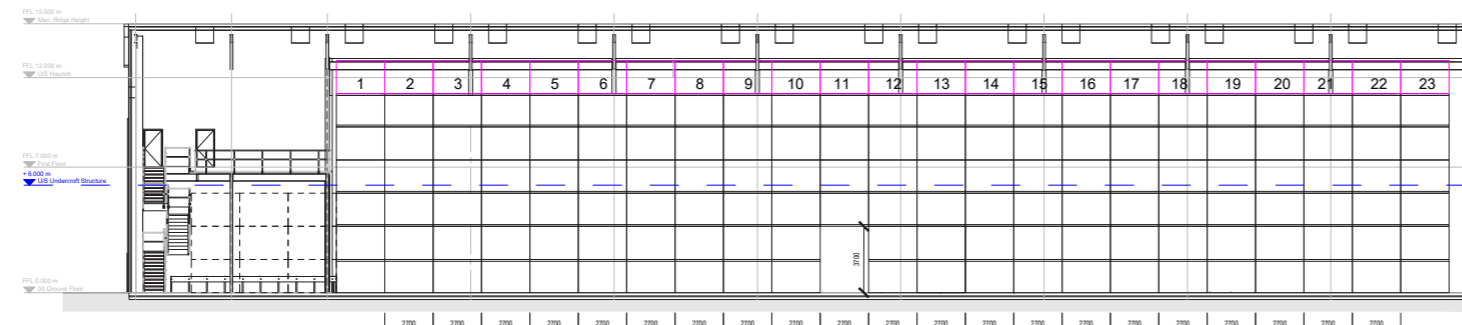
First floor and plant deck shown hatched. Clear height to underside of structure and pipework of 6000mm. Potential for additional racking subject to Specialist Racking Design shown dashed.



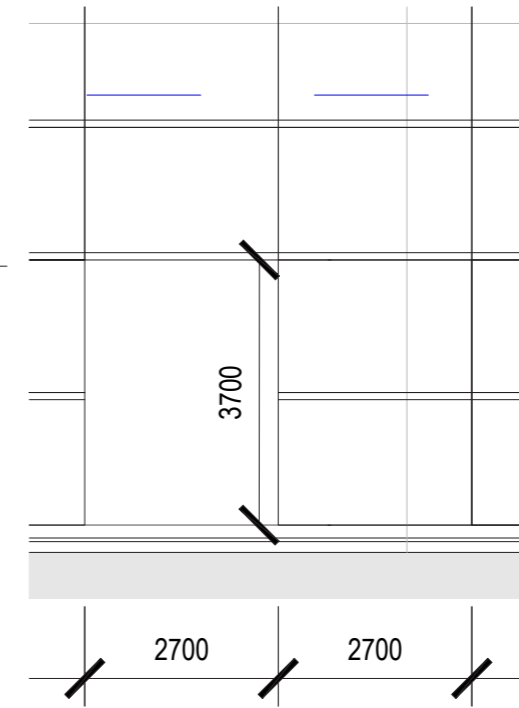
Racking Layout Plan - Scale - 1:200



Racking Layout Section A - Scale - 1:200



Racking Layout Section B - Scale - 1:200



Illustrative Tunnel Section Scale - 1:50

- Loss of two half racks (2 Pallets) over exit door/ exit route
- Loss of two racks (4 Pallets) for Tunnel
- Loss of 1 pallet per rack due to column
- Potential loss of 1 pallet per rack obstructed by column

Racking Assumptions (12m Haunch)

Racking space for 2no. pallets assumed as:
1850(h)x2700(w)x900(d)mm
Space between back-to-back racks: 200mm
Minimum aisle width: 2500mm

- No. full height (to u/s haunch) racking spaces: 2,634 no. racks (= 5,268no. pallet spaces)
- No. unobstructed tunnels (18no.): 72no. racks (=144no. pallet spaces)
- No. escape door / route racking positions (22no.): 132no. racks (=264. pallet spaces)
- No. Obstructed by columns (3no.): 18no. racks (1 pallet per rack = 18 pallets)

Total pallet capacity to underside of haunch within main warehouse: 5,268 + 144 + 264 + 18 = 5,694 pallets

Potential additional racking below the undercroft shown dashed to maximum height of 6m.

- No. unobstructed racking spaces below the undercroft (23no.): 69 no. racks (= 138no. pallet spaces)
- No. obstructed rack positions by columns below the undercroft (3no.): 9no. racks (=9no. pallet spaces)
- No. potentially obstructed rack positions by columns below the undercroft (3no.): 9no. racks (=9no. pallet spaces)

Total potential pallet capacity to the undercroft: 138 + 9 + 9 = 156 Additional pallets

Potential additional racking within the apex void.

No. racking spaces above the haunch: 355 no. racks (= 710no. pallet spaces)

Total potential pallet capacity for 12m haunch: 5,694 + 156 + 710 = 6,560 pallets

Note:
Racking layout shown illustratively only. Confirmation of actual pallet numbers to be given by Specialist Designer to suit fire strategy and compliant escape distances.



6,560

NARROW AISLE POSITIONS (UK)